



2011 ANNUAL REPORT

INDIGENOUS TRANSFORMATION THROUGH RESEARCH EXCELLENCE



NEW ZEALAND'S INDIGENOUS CENTRE
OF RESEARCH EXCELLENCE

INDIGENOUS TRANSFORMATION THROUGH RESEARCH EXCELLENCE

*Whāia ngā pae o te
māramatanga me te aroha*

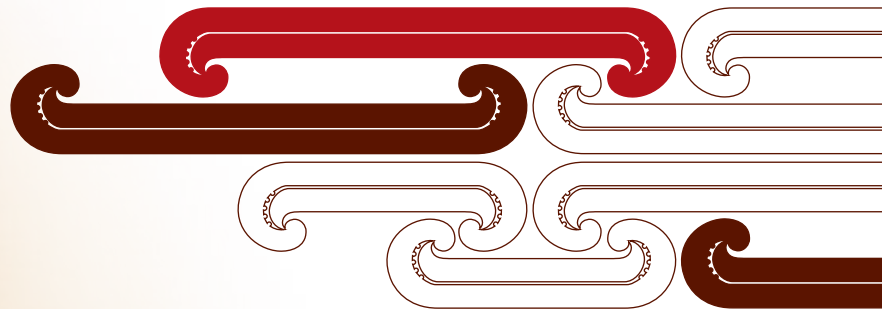
*Te pae tata,
te pae tawhiti*

*Kia puta koe ki te whaiao
ki te ao mārama*

*Pursue the horizons of
understanding and love*

*The near horizon,
the distant horizon*

*So that you may emerge
into the world of light*



Ngā Pae o te Māramatanga is a Centre of Research Excellence
funded by the Tertiary Education Commission

VISION

To unleash the creative potential of Māori peoples to bring about positive change and transformation in the world.

MISSION

To conduct excellent research relevant to Māori communities – research which leads to transformation and positive change.



KEY HIGHLIGHTS

Evolved Research Themes and priorities developed to meet our mission and vision; a new research investment model implemented for this research

Engaging the network of our researchers and participating research entities across the country, to foster the Ngā Pae o te Māramatanga community and create momentum for our research goals

National Research Symposium on Māori Economic Development: Critical Success Factors

Online hosting of *AlterNative: An International Journal of Indigenous Peoples*, increasing our international reach while reducing our environmental footprint

Successful evolution of the Centre into streamlined groups within the Director's Office to align with our evolved strategic direction

10 research projects completed in 2011, 7 projects initiated and 14 further projects continued to receive direct support

5 books, 6 book chapters and 24 journal and conference proceedings papers were authored by our supported researchers in 2012

Reflecting Māori oral traditions, more than 75 presentations at conferences, seminars, wānanga and community events showcased Ngā Pae o te Māramatanga research or were supported by our knowledge sharing awards

We supported 24 research, capability building and knowledge sharing events, and 13 researchers were supported to attend international conferences

21 on-going PhD students supported, highlighting our commitment to excellent emerging research and researchers

CONTENTS

Vision and Mission	2
Key Highlights	3
Contents	4
Chairman's Report	6
From The Director	7
Research Themes and Priorities	8
A Commitment to Excellent Research	9
Supporting Emerging Scholars	16
Sharing Knowledge	18
Innovative Global Research Dissemination	20
Growing Indigenous Development Internationally	22
International Collaborations in Excellence	26
Board of Directors	28
Our Team	31
Participating Research Entities in Ngā Pae o te Māramatanga	35
Financial Statements	36
Publications and Other Outputs	41
Contact	49





CHAIRMAN'S REPORT

From its inception, Ngā Pae o te Māramatanga has contributed to national development and benefit. With our mid-term review approval from the Tertiary Education Commission and the implementation of the strategic direction for 2011–2014, we are now poised to contribute even more to Māori and national development, helping catalyse the transformation of society through our research excellence.

2011 has seen the implementation of the next phase of Ngā Pae o te Māramatanga, an evolution and major step to secure the future of the Centre ensuring our relevancy for the coming years. Our evolved strategic direction is focused on the real challenges and opportunities in our communities and how to address or nurture these through research, knowledge sharing and capability building. We have integrated the previously distinct core programmes of the Centre, increasing productivity to ensure an efficient approach to the opportunities and challenges ahead.

Our Director, Professor Charles Royal, appointed in 2010, has led the Centre through the first implementation stage of our evolved direction,

ensuring the right team is in place. Appointments to the senior management team of two further directors, Dr Daniel Hikuroa and Daniel Patrick as Research Director and Executive Director, respectively, ensure that we have a strong management team in place to lead the Centre to fulfil its vision.

There have been many achievements throughout the year; as the Centre has evolved, productivity has increased and our innovation, development and excellence in research, knowledge sharing and capability building continue and strengthen.

Our strategic direction towards the opportunities and challenges that face Māori and indigenous peoples ensures that the Centre will address research areas resulting in a difference to Māori and indigenous peoples in New Zealand and around the world, enabling transformation of society as a whole.

Sir Tipene O'Regan

As the Centre has evolved, productivity has increased and our innovation, development and excellence in research, knowledge sharing and capability building continue and strengthen



FROM THE DIRECTOR

2011 has been a year of evolution for Ngā Pae o te Māramatanga. Our mid-term review was approved by the Tertiary Education Commission and resulted in the evolution of the Centre to enhance alignment with our strategic direction 2012–2014. We continue to fulfil our mandate as a Centre of Research Excellence while focusing on outcomes of this excellent research flowing through to our communities, resulting in development and transformation of both Māori communities and the nation. The role of Indigenous Development research is critical to national development, and Ngā Pae o te Māramatanga is now better positioned to take a leading role in this transformation.

The Centre's evolution better integrates our programmes and activities to provide an effective and efficient organisation model including two groups working together to achieve the Centre's vision. Research, headed by Dr Dan Hikuroa, includes Centre-based researchers as well as researchers based around our extensive network of participating research entities in New Zealand. The executive, headed by Daniel Patrick, develops, leads and supports the investments, operations, events, publishing, communications, and administration functions of the Centre. The executive not only supports our research and researchers, but also works as an active part of the strategic plan to extend and develop the contribution of all Māori and indigenous research to foster national and international development. Both groups, based in the Centre's Director's office in Auckland, carry out aspects of our mission, to conduct excellent research relevant to Māori communities.

This 2011 annual report outlines the many activities and outputs achieved by Ngā Pae o te Māramatanga. These include high quality on-going and new research programmes and projects, capability and capacity building through support of emerging scholars, and sharing our knowledge and learning with others in New Zealand and worldwide, enabling transformational change. This change is facilitated through innovative online platforms and traditional peer-reviewed publications, as well as in person, facilitating the *kanohi-ki-te-kanohi* (face-to-face) interaction pivotal to building indigenous research relationships.

Research excellence cannot occur in isolation. Our new strategic direction increases the involvement of our communities, focusing our initiatives on transformation of communities that feed out to wider national and international outcomes. Increasing researcher numbers from and in our communities has always been a priority of Ngā Pae o te Māramatanga, and we continued to offer support to developing and emerging students and researchers in 2011. Our local Māori communities offer opportunities to the nation. Researching and developing these opportunities on a platform of indigenous development locates them firmly within a worldwide research framework, rather than as a New Zealand political problem to be solved. Indigenous issues from around the world resonate with Māori, just as Māori issues, research and solutions are significant examples to others around the globe – highlighting and providing us the global leadership opportunities in this field. Linking and developing university-, institution- and community-based research enables us to transform communities at home, and reach out to the world with our solutions. This year has laid the foundations for our new strategy and in this annual report, we highlight our many achievements in 2011.

Professor Te Ahukaramū Charles Royal

RESEARCH THEMES

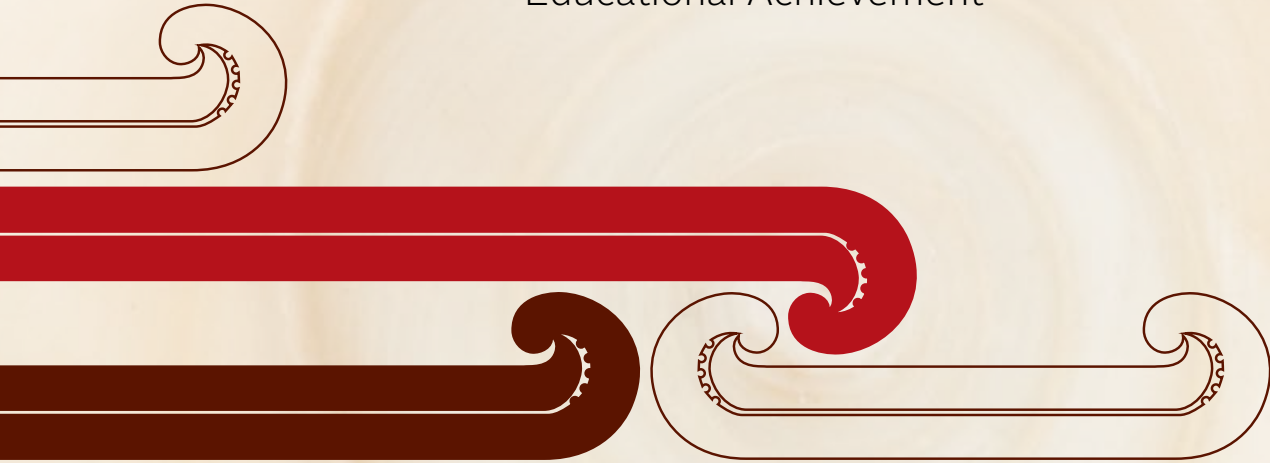
New Frontiers of Knowledge

Economic Development

Environmental Sustainability

Health and Social Wellbeing

Educational Achievement



RESEARCH PRIORITIES

Optimising Māori Economic Performance

Fostering Te Pā Harakeke –
Healthy and Prosperous Families of Mana

Sustaining Māori Distinctiveness

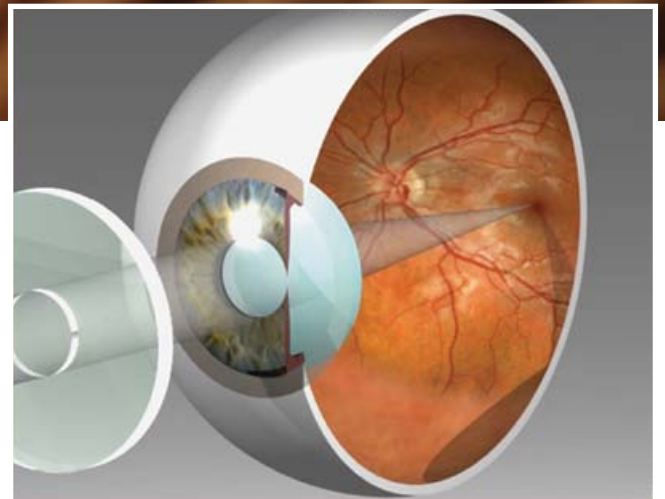
A COMMITMENT TO EXCELLENT RESEARCH

We conduct excellent research that addresses needs and opportunities arising in Māori communities

Whatukura: A Bioengineered Model of the Human Eye

This study, led by Ngā Pae o te Māramatanga Principal Investigator Dr Jason Turuwhenua, developed a computer-based bioengineered model of the human eye to provide greater insight into eye disease and treatments. This research helps patients and their whānau better understand their eye and vision exams, and has improved clinical outcomes.

Completed in 2011, this Ngā Pae o te Māramatanga project holds extra significance for Māori as research suggests that past negative experiences for Māori in the health system affect further access, uptake and use of health care services. The goal is to have this non-threatening model system available in clinics or even in the home, showing whānau members the patient's view, and demonstrating progression and the benefits of treatment. Such developments foster health and social wellbeing, and contribute to te pā harakeke – healthy and prosperous families of mana.



Jason (Ngāti Porou, Ngāi Tūhoe) is a Ngā Pae o te Māramatanga Principal Investigator and Research Fellow at The University of Auckland's Auckland Bioengineering Institute and Department of Optometry and Vision Science. He has long been interested in how engineering methods might be applied to problems in vision. In this initial project the research team developed the program and completed initial testing, with positive feedback. The team is now looking at the possibility of using “augmented reality” or human–computer interaction in real time, and developing other aids for people with poor vision.

Harvesting the Fruits of Papatūānuku A Kaitiaki Approach to Geothermal Development

Māori have used geothermal waters and materials for centuries, yet in contemporary times few iwi groups have developed their geothermal resources, even though geothermal energy has sustainable and renewable attributes. One barrier to development has been the lack of a clear pathway that incorporates kaitiakitanga responsibilities into the development process.

This Ngā Pae o te Māramatanga project, completed in 2011, addressed this by creating a geothermal development model that meets both governmental consent requirements and kaitiakitanga obligations. The Kaitiaki Geothermal Development Model (KGDM) integrates geothermal science, engineering, appropriate governance and management systems with investment opportunities, all underpinned by kaitiakitanga.

The project team led by Ngā Pae o te Māramatanga Principal Investigator Dr Dan Hikuroa created a preliminary KGDM by using the decision-making framework, the Mauri Model,

as a starting point. This model, based around kaitiakitanga principles, assesses sustainability in four dimensions: environmental, social, economic and cultural. It is unique to the New Zealand context as it is designed to fit the Resource Management and Local Government Acts and is grounded in mātauranga. The second stage of creating the KGDM explored capital investment and funding options and analysed current models such as joint venture partnerships and Māori-owned enterprises.

The KGDM gives stakeholders a voice and assesses the sustainability of various geothermal development options. By doing this, the project not only enabled greater iwi participation in the economic development of their resources, but also used mātauranga Māori in the solution.



Kanakana Harvest Mātauranga: Potential Tools to Monitor Population Trends on the Waikawa River, Murihiku (Southland)



The population of kanakana (piharau, lamprey) is poorly understood and believed to be declining. In Murihiku, concern for this taonga species led to this research in the Waikawa River.

This Ngā Pae o te Māramatanga project focused on developing a method not only effective as an index of kanakana population abundance, but also with tangible links to the practice of mahinga kai, traditional Māori harvesting practices. This enables the kaitiaki to conduct monitoring, interpret the results and integrate their mātauranga into the management of this resource.

The long-held tradition of kanakana harvest continues on the Waikawa River at Māngai Piri or Niagara Falls and the upstream Top Falls. Māngai Piri is adjacent to a nohoanga, a traditional seasonal mahinga kai gathering area. Here the fish are harvested at night, by hand, on their way up the falls.

Led by Ngā Pae o te Māramatanga Principal Investigator Dr Jane Kitson, this project compared the use of the Dual-Frequency Identification Sonar (DIDSON), a modern method to determine population abundance in other fisheries, with observers' visual counts, a method akin to traditional harvest methods. The results



from the two showed similar numbers; however, observer fatigue limited the visual counts, suggesting it is not sustainable over the long term. So the researchers identified other possible monitoring tools in line with traditional methods, such as using traps made of brush and bracken to capture kanakana and enable counts during the day.

This project, completed in 2011, has led to further research into how effective these other traditional methods are as indices of abundance.

Other projects completed in 2011 included:

What is the Cost? Estimating the Economic Costs of Māori–Non-Māori Child Health Inequities in Aotearoa

The results of this project contribute to the evidence base for action and policy development in Aotearoa on child health inequities.

Principal Investigator

Associate Professor Pāpārangi Reid

Au e Ihu! Ngā Mōrehu Taua: Those that are Left Behind must Endeavour to Complete the Work

This project completed the research originally initiated by veterans of D Company, 28 Māori Battalion and their whānau, into the socio-cultural, tribal, and political history of the Company.

Principal Investigators

Ted (Edward) Waaka and Associate Professor Huia Tomlins-Jahnke

Kaumātua Taonga Aroha

Part of a larger national longitudinal research programme, Ngā Pae o te Māramatanga co-funded the cohort study of older Māori to determine the importance of whānau generational issues, health, cultural, social and economic factors in predicting quality of life, successful ageing and survival.

Principal Investigator

Dr Lorna Dyll

Aituā: Death in a Changing Māori World

This study considered tangi practice, whakapapa, changing environments, community values, sharing knowledge, transforming ritual and what it means to be Māori.

Principal Investigator

Professor Ngahuia Te Awekotuku

Ngā Tikanga Mate: Māori Death and Burial Customs Comparing Tikanga Māori and the Law

This project looked at how tikanga and the law regulate death and burial, especially around areas of conflict.

Principal Investigator

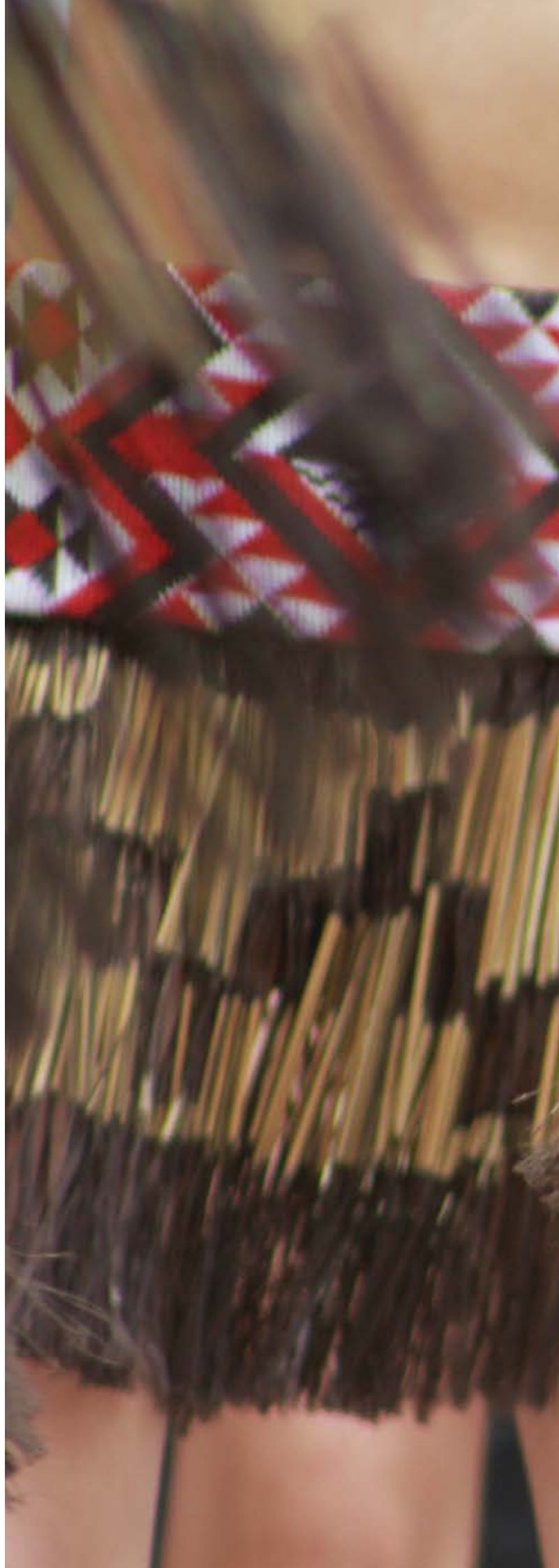
Associate Professor Nin Tomas

Restoring the Mauri to Rotoitipaku (an Industrial Waste Site): Implementing Mātauranga Māori in a Scientific Paradigm

This project provided the local iwi with a pathway for restoring the mauri to this area, using a methodology that adhered to kaitiakitanga.

Principal Investigator

Dr Dan Hikuroa





Ngā Pae o te Māramatanga projects initiated in 2011

Dietary Intake and its Effect on Early Life Course, with Particular Focus on Māori Communities.

The prevalence of obesity is significantly higher in the most deprived and an unpredictable food supply is likely to be more prevalent in Māori. While low meal frequency has been found to be a potential risk factor for childhood obesity, there is less information on the effect of erratic eating patterns, in which the amount and timing of nutrient intake is unpredictable from day to day. This project, funded by the National Research Centre for Growth and Development, will examine whether food insecurity is associated with specific health outcomes.

Ngā Pae o te Māramatanga Researcher
Dr Te Kani Kingi

Devolution, Autonomy, Responsibility – Exploring the Outcomes of Indigenous Environmental Governance

This project, co-funded with Te Whare Kura of The University of Auckland, will explore the outcomes of Māori environmental governance by evaluating case studies where natural resource administration has been transferred to iwi or hapū under Treaty of Waitangi settlements. Because such acts of devolution are often too recent to be evaluated appropriately, the research will also consider longer-term cases where Māori perform relatively autonomous governance, either through devolution negotiated outside of the Treaty settlement process, or where hapū never relinquished control or administration of resources. The project team will consider the challenges to Māori environmental decision making, the conditions for long-term success and the nature of the relationship between self-determined governance and environmental responsibility.

Principal Investigator
Dr Dan Hikuroa

The Wānanga Project

The Māori term most closely associated with the creation of new knowledge is wānanga and historically whare wānanga were the centres of higher learning. This project will (i) define and analyse wānanga both historically and in the contemporary setting, and identify its contribution to the realisation of creative potential in Māori communities; (ii) analyse wānanga as an approach to indigenous



knowledge creation; and (iii) foster the creative potential of selected Māori communities through wānanga. To achieve this, a series of wānanga will be held, focusing on relevant topics for the respective community. The initial communities are Waipoua, Te Wahapū o Hokianga and Tāmaki Makaurau.

Lead researcher
Professor Charles Royal

Whare Tapere Programme of Research

As an extension to the current project Towards a New Whare Tapere, the following projects were developed to create an integrated programme of research:

1. Whakaahua: An Approach to Performance
2. Karetao-Puppets: Creation of New Karetao and Performances
3. Tākaro-Games: Understanding Tākaro in History, Preparing New Tākaro Programmes
4. Kōrero: History and Literature of the Whare Tapere and its Conversion into Performance – Tinirau and Kae, A Case Study

Principal Investigator
Professor Charles Royal

Ngā Pae o te Māramatanga continued to support the following programmes of research and research projects in 2011, listed with their lead investigators:

- Te Pae Tawhiti: Māori Economic Development, Research Programme – Professor Graham Smith
- Te Pae Tawhiti: Te Kura Roa, Research Programme – Dr Rāwinia Higgins and Associate Professor Poia Rewi
- Towards the New Whare Tapere: The Creative Potential of Mātauranga Māori in the Performing Arts – Professor Charles Royal
- Triangulating on the Mechanism for the Lunar Clock: Insights from the Māramataka and Science Waka – Professor Michael Walker
- Ngāi Te Rangi Iwi Community Action Research Project – Ngāreta Timutimu
- Kia Areare ki ngā Reo o ngā Tipuna: Strengthening Rongomaiwahine, Kahungunu Dialects through Archival Recordings – Dr Joe Te Rito (pictured above)



PHOTOS: SERENA STEVENSON

- Commercial Feasibility of Using Mātauranga Māori Based Fish Traps to Eliminate By-Catch, Phase Two – Dr Shaun Ogilvie
- Virtual Repatriation – A Database of Māori Taonga in Overseas Museums – Arapata Hakiwai
- The Ethics, Processes and Procedures Associated with the Digitisation of the Pei Jones Collection – Dr Hēmi Whaanga
- Adapting Principles from Te Rongoa into Ecologically and Culturally Sustainable Farm Practice – Dr Marion Johnson
- Te Ataakura: Re-Connecting Voyage Collections in Archives and Museums through the Creation of Digital Taonga – Dr Wayne Ngata
- Exploring a Māori Classificatory System of Flora and Fauna within Tainui Waka – Tom Roa
- Tetrodotoxin in Kaimoana: Science and Mātauranga Mitigating Health Risks from a Lethal Neurotoxin – Dr Shaun Ogilvie
- Computer Decision Support to Aid Sustainable Contemporary Use of Taonga Species – Corey Bragg
- He Iho Reo: Developing a Tool Box to support Māori Language Transmission and Maintenance – Associate Professor Poia Rewi

SUPPORTING EMERGING SCHOLARS

Ngā Pae o te Māramatanga is nurturing future scholars, and awarded three full doctoral scholarships in 2011 to provide support for excellent doctoral study in the area of indigenous development research, aligning to our research priorities, and to develop future research capabilities and capacity.



Donna Ngaronoa Gardiner was born in Tauranga Moana with tribal connections to Ngāiterangi, Ngāti Ranginui and Ngāti Pūkenga. She is a doctoral candidate at Te Whare Wānanga o Awanuiārangi in Whakatāne. Donna's research will investigate indigenous leadership and governance in Aotearoa, specifically whānau, hapū and iwi governance.

Of particular interest is the role of women in leadership and governance in Māori communities. She will examine how quality Māori leadership may influence the realisation of whānau, hapū and iwi potential and success, and what mechanisms are employed to ensure the transmission of leadership and governance across generations. Donna works part-time as the Research and Community Coordinator for Ngā Pae o te Māramatanga.



Paora Mato is a doctoral candidate at the University of Waikato and affiliated to Te Whānau-ā-Apanui and Ngāti Tūwharetoa. After many years in the workforce he returned to the University of Waikato in 2003 to continue his studies, including learning te reo Māori.

A number of computer application interfaces are available in te reo Māori, including Microsoft Office and the Google web search interface. Paora's doctoral research aims to determine what role translated computer interfaces and computer technology should perform in language revitalisation strategies. He also aims to quantify issues of awareness, engagement and perception, with regard to translated interfaces. Further analysis of language strategies in New Zealand will discuss the linguistic landscape and determine what is required to ensure the use of te reo Māori is considered normal. He will particularly focus on various social networking sites such as Facebook, Twitter, MySpace, blogs and email.



Dennis Ngāwhare-Pounamu is a PhD candidate of Te Kawa a Māui: School of Māori Studies at Victoria University of Wellington. He is affiliated to Taranaki Tūturu.

His doctoral research investigates the contested space between oral and written tribal histories in

Taranaki. While the iwi Taranaki Tūturu is used as a case study, this is a phenomenon witnessed in multiple tribal rohe, both in rhetoric from the paepae and in the informal discussions of the kitchen. Document analysis is focused on the Travelling Mountain narrative and a qualitative research process of interviews and fully informed participant observation is followed on the marae of Taranaki. Autoethnographic reflections of the experiences of a scholar (and member of the tribe) will provide examples to explore the theory of a contested space. Defining the parameters of the space will illuminate how oral and written tribal histories can either contest or complement contemporary cultural practices.

Dennis is a coordinator of MAI ki Pōneke, the Ngā Pae o te Māramatanga postgraduate support network for Māori and indigenous doctorate students based in the Wellington region.

In addition, we supported 18 PhD scholars and projects, listed below, as well as awarding 12 pre-doctoral summer internships and 12 research methods and skills scholarships via the New Zealand Social Statistics Network summer programme.

Current Ngā Pae o te Māramatanga PhD Scholars

- Jani Wilson, The University of Auckland, He Whakaaturanga Pohewa o te Iwi Māori: A Visual Historiography of Māori on Film
- Lloyd Carpenter, University of Canterbury, 150 Years of Riches: How the Central Otago Gold-Rush Shaped New Zealand Culture and Society
- Ronald Ngata, Massey University, Understanding Matakite: An Ecological Exploration of the Health-Related Effects of Spiritual Experiences among Māori
- Hiromi Sakamoto, The University of Auckland, Kapa Haka Teachers' Meanings of Teaching Kapa Haka
- Keri-Ann Wikitera, AUT University, Māori Spaces in Foreign Places, Hinemihi o te Ao Tawhito
- Kirsten Gabel, University of Waikato, Kia Hoki ki te Ūkaipō
- Te Manaaroha Rollo, University of Waikato, Kīngitanga: The Māori King Movement. An Inspiration Towards Waiata, Pūoro and Electro-Acoustic Composition
- Rebecca Wirihana, Massey University, Māori Women's Voices on Life, Experience, and Journey
- Xavier Forde, Victoria University of Wellington, Tragedy, Agonism, Pluralism: A Hybrid Model of Pluralism Applied to Biculturalism in Aotearoa
- Kelly-Ana Morey, The University of Auckland, For the One who Paints Such Beautiful Squares: Sunday Reed and her Place in the Art and Poetry of Sidney Nolan
- Darnell Kennedy, University of Otago, Microbial Analysis of Bite Marks by Sequence Comparison of Streptococcal DNA
- Tiopira McDowell, The University of Auckland, Te Ana o te Raiona: Māori Parliamentary Representation and the Māori Party, 1867–2008
- Tai Walker, Victoria University of Wellington, An Exploration of the Evolution and Application of Whānau
- Melanie Cheung, The University of Auckland
- Phoebe Macrae, Van der Veer Institute, University of Canterbury
- Christopher Rodley, Massey University
- Aue Te Ava, The University of Auckland
- Peter Meihana, Massey University



SHARING KNOWLEDGE

Ngā Pae o te Māramatanga hosted a two-day Research Symposium on Optimising Māori Economic Development in November which brought together more than 150 people at Te Wharewaka o Pōneke in Wellington.

The symposium provided an essential national platform for researchers, communities and policy makers to discuss and examine critical success factors for Māori economic development, including aspirations, capacity and capability, collaboration, and local solutions and opportunities. Speakers included Sir Tipene O'Regan, Professor Stephen Cornell from the University of Arizona, Professor Graham Smith, June McCabe, Traci Houpapapa and Whaimutu Dewes.

The symposium complemented and contributed to one of our significant research programmes, Te Pae Tawhiti Māori Economic Development and our current research priority Optimising Māori Economic Performance. The publication *2011 Te Pae Tawhiti Māori Economic Development Research Programme Report and Literature Review* was published for the symposium.

As well as strong contributions from Māori leaders, with examples and models of current development, international keynote speaker Professor Cornell's presentation gave examples of collaboration, self-determination and economic development in indigenous nations in North America. Professor Cornell is Director of the Udall Center for Studies in Public Policy at the University of Arizona and co-founder and co-director of the Harvard Project on American Indian Economic Development.

Ngā Pae o te Māramatanga Research Director Dr Dan Hikuroa summed up the overall message from the symposium by saying "Māori economic development has to happen along with social and cultural development, and it must be driven by Māori aspirations." He echoed the words of Sir Tipene O'Regan by underlining the importance of working together to find solutions that will improve the lives of Māori not just today, but for generations to come.

To watch video of the speakers, visit <http://mediacentre.maramatanga.ac.nz/med2011.php>
To download the report, visit <http://www.maramatanga.ac.nz/project/te-pae-tawhiti-māori-economic-development>

Our Horizons of Insight Seminar Series provided an opportunity for local dissemination and discussion of an array of projects and topics during the year. In June, Dr Te Kani Kingi and Jordan Waiti explored Māori concepts of whānau resilience. This drew from a research project which presents a framework for considering the cultural aspects of resilience, and how these might be nurtured and promoted within and throughout whānau.

Dr Mere Kēpa presented in July on the research project Life and Living in Advanced Age: A Cohort Study in New Zealand (LiLACS NZ). Dr Kēpa talked about how research such as this is not a neat, linear process. In September Dr Hēmi Whaanga presented on the ethics, processes and procedures associated with his project digitising the Pei Jones Collection. In October Dr Amohia Boulton and Lynley Cvitanovic spoke on their research, Facilitating Whānau Resilience through Māori Primary Health Intervention: Can Māori Health Service Provision Make a Difference?

Other international seminars held in 2011 supported by Ngā Pae o te Māramatanga included a visit from David Hernández Palmar, Wayuu language activist and media producer from Venezuela. He gave a public lecture on “The Centrality of Language in Indigenous Transformation” and led a research workshop entitled “Indigenous Peoples, Participatory Democracy and New Media.” Ngā Pae o te Māramatanga Visiting Scholar, Associate Professor Makere Stewart-Harawira from the University of Alberta presented her work around New Zealand, including a Ngā Pae o te Māramatanga seminar entitled Within and Without the Empire: Indigenous Knowledge and its Discontents in a Time of Great Transition.

“Māori economic development has to happen along with social and cultural development, and it must be driven by Māori aspirations.”

Dr Dan Hikuroa

Building and Supporting Networks

During 2011 we enhanced and strengthened our on-going relationships with our researchers and Participating Research Entities (PREs) by holding our annual hui- ā-tau and six hui and research funding forums throughout our entity and research network. We also held two research wānanga, encompassing an international writing retreat, fostering networks and opportunities for international collaboration and funding.

Other 2011 sharing, development and networking activities included:

The **2011 MAI Doctoral Conference** was held at Te Mānuka Tūtahi Marae, Whakatāne in November. More than 90 people attended the conference which focused on “Transformation: The Politics of Advancing Knowledge”.

The Ōrotokare trust hosted their **second experimental whare tapere**. The event in Waimangō, Hauraki, was grounded in a community setting and showcased different traditional Māori games and entertainments, as well as new creative works.

Professor Charles Royal was part of the **New Zealand Māori delegation invited to the First Round Table of the World Parliament of Indigenous Peoples** held in India. The mission of this meeting was to set in motion discussions that will lead to the formation of a United Nations-recognised World Parliament of Indigenous Peoples. This will serve as a strong voice advocating for communities, as well as being a storehouse for wisdom and its dissemination to the larger world community.

We also supported:

- o The Wiremu Maihi Te Rangikaheke Memorial Lecture at Waikato University
- o Two wānanga for Māori actors, performers and media students led by Ella Henry and Ben Mitchell
- o The “Making Privilege History” Inaugural Workshop in Auckland
- o The WAI262 Symposium held at the University of Waikato
- o A Constitutional Transformation Wānanga series led by Professor Margaret Mutu.

INNOVATIVE GLOBAL RESEARCH DISSEMINATION

Technology is changing the way we reach our audiences. While print and text remain important, video provides an immediate and accessible path into our research. Indigenous research has always had a strong oral tradition, from the principles of face-to-face communication to strong oral presentations at conferences and wānanga.

Our online media centre allows this to take place over time and distance – enabling audiences to watch presentations over the internet after the event, and ensuring a permanent record of presentations. Expanding in 2011 into short documentary films, we now present our research to both expert and general audiences all over the world via the internet portal.

2011 has seen the addition of documentaries, our 2011 Horizons of Insight research seminar series, coverage of the Māori Economic Development symposium from November 2011 and other presentations, events and research from throughout the year. These are added to the rich resource of conference, symposium, seminars and events from previous years.

<http://mediacentre.maramatanga.ac.nz>

Reaching our national audience through our email and print **quarterly newsletter**, we highlight research stories, researchers and upcoming and past events and publications from Ngā Pae o te Māramatanga. The newsletter is available online and in print, and distributed internationally.

<http://www.maramatanga.ac.nz/news-events/newsletters>

Other innovative ways we reached our audiences included a School Tour, supported by Ngā Pae o te Māramatanga, in which Professors Kuni Jenkins and Alison Jones took their exhibition *Ngā Taonga Tuhituhi – Written Treasures* to six secondary schools in the Northland region.

Pukenga Tukutuku, our online database of Māori and Indigenous scholars continued to grow in 2011. All Ngā Pae o te Māramatanga researchers have a profile, as well as many other Māori and indigenous scholars. This remains a platform to enable scholars to connect and communicate with each other and with iwi, facilitating mutual support and learning. This website asks scholars to register, provide details of their expertise, their willingness to provide mentoring and other forms of support, their research interests or activities, and other relevant biographical information.

<http://scholar.mai.ac.nz>

Online videos published in 2011 include:

Boulton, A. C. H. (2011). Facilitating Whānau Resilience Through Māori Primary Health Intervention: Can Māori health service provision make a difference. On *Seminar Series*. Waipapa Marae, The University of Auckland: Ngā Pae o te Māramatanga.

Carter, L., Jefferies, R. & Collins, I. (2011). Panel Four Discussion: Collaboration. On *2011 Critical and Sensitive Research Issues Symposium (CSRI) Māori Economic Development*. Wellington, New Zealand: Ngā Pae o te Māramatanga.

Cornell, S. (2011). Critical and Sensitive Research Issues Symposium (CSRI) Māori Economic Development. On *2011 Critical and Sensitive Research Issues Symposium (CSRI) Māori Economic Development*. Wellington, New Zealand: Ngā Pae o te Māramatanga.

Dewes, W. (2011). Whakamahia – Kia Taea What we need to succeed. On *2011 Critical and Sensitive Research Issues Symposium (CSRI) Māori Economic Development*. Wellington, New Zealand: Ngā Pae o te Māramatanga.

Dyall, L. (2011). Whānau Ora: Visualising a New Future. On *Seminar Series*. Waipapa Marae, The University of Auckland: Ngā Pae o te Māramatanga.

Everitt, K., Henry, E. & Roderick, M. (2011). Panel Two Discussion: Capacity and Capability. On *2011 Critical and Sensitive Research Issues Symposium (CSRI) Māori Economic Development*. Wellington, New Zealand: Ngā Pae o te Māramatanga.

Hikuroa, D. (2011). Symposium Summary. On *2011 Critical and Sensitive Research Issues Symposium (CSRI) Māori Economic Development*. Wellington, New Zealand: Ngā Pae o te Māramatanga.

Houpapa, T. (2011). Local Solutions, Local Opportunities. On *2011 Critical and Sensitive Research Issues Symposium (CSRI) Māori Economic Development*. Wellington, New Zealand: Ngā Pae o te Māramatanga.

Kēpa, M. (2011). Life and Living in Advanced Age. A Cohort Study in New Zealand (LILACS NZ). Collaborative Quantitative Longitudinal Research. On *Seminar Series*. Waipapa Marae, The University of Auckland: Ngā Pae o te Māramatanga.

Kingi, T. K. & Waiti, J. (2011). Whānau Resilience: A Case Study. On *Seminar Series*. Waipapa Marae, The University of Auckland: Ngā Pae o te Māramatanga.

McCabe, J. O. (2011). Combined Keynote and Day One Wrap Up. On *2011 Critical and Sensitive Research Issues Symposium (CSRI) Māori Economic Development*. Wellington, New Zealand: Ngā Pae o te Māramatanga.

O'Regan, T. (2011). Closing Address. On *2011 Critical and Sensitive Research Issues Symposium (CSRI) Māori Economic Development*. Wellington, New Zealand: Ngā Pae o te Māramatanga.

O'Regan, T. (2011). Opening Address. On *2011 Critical and Sensitive Research Issues Symposium (CSRI) Māori Economic Development*. Wellington, New Zealand: Ngā Pae o te Māramatanga.

Smith, G. (2011). Transforming Māori Economic Development. On *2011 Critical and Sensitive Research Issues Symposium (CSRI) Māori Economic Development*. Wellington, New Zealand: Ngā Pae o te Māramatanga.

Solomon, M., Simpson, L. & Riley, G. (2011). Panel One Discussion: Aspirations. On *2011 Critical and Sensitive Research Issues Symposium (CSRI) Māori Economic Development*. Wellington, New Zealand: Ngā Pae o te Māramatanga.

Stewart-Harawira, M. (2011). Within and Without the Empire: Indigenous Knowledge and its Discontents in a Time of Great Transition. On *Seminar Series*. Waipapa Marae, The University of Auckland: Ngā Pae o te Māramatanga.

Wehipeihana-Wilson, T., Dodd, M. & Orzecki, R. (2011). Panel Three Discussion: Local Solutions, Local Opportunities. On *2011 Critical and Sensitive Research Issues Symposium (CSRI) Māori Economic Development*. Wellington, New Zealand: Ngā Pae o te Māramatanga.

Whaanga, H. (2011). He Matapihi Mā Mua, Mō Muri: The Ethics, Processes and Procedures Associated With the Digitisation of the Pei Jones Collection. On *Seminar Series*. Waipapa Marae, The University of Auckland: Ngā Pae o te Māramatanga.





GROWING INDIGENOUS DEVELOPMENT INTERNATIONALLY

AlterNative: An International Journal of Indigenous Peoples started in 2005 and published three issues comprising Volume 7 in 2011. It was founded by Ngā Pae o te Māramatanga to address a need in the international indigenous scholarly community. Academics and researchers must publish their work to prosper, but many western academic journals do not value indigenous research undertaken on indigenous and cultural principles. This research stands equal to the scholarship of the western academy, but needed a vehicle to allow it to enter the international scholarly conversation and to enable it to be judged by peer review on its own terms as well as those of the mainstream.

AlterNative is Ngā Pae o te Māramatanga's answer to this challenge. Each article is peer reviewed, satisfying this tenet of academic excellence. We aim to have all articles reviewed by an indigenous reviewer from within the same group or peoples as the writer or topic under consideration, and all papers are reviewed by at least one indigenous academic and by an international-level expert in the field. We also solicit reviews from non-indigenous or mainstream academic scholars, ensuring the excellence of the published article on both indigenous and western terms. The profile of *AlterNative* continues to grow here and overseas; in 2011 we launched online hosting and content is regularly downloaded in over 50 countries worldwide. We published a themed issue on Māori health and two general issues, containing 21 articles on a wide range of varied international topics (listed overleaf). Submissions and readers have grown so much that we look forward to quarterly publication in 2012 as we continue to fulfil a need in the indigenous research community – giving our researchers a strong voice in the international scholarly conversation.

<http://www.alternative.ac.nz>

Published in conjunction with Huia Publishing at the end of 2011 was the first volume of the **Ngā Pae o te Māramatanga Edited Collections** series, *Māori and Social Issues* co-edited by Dr Tracey McIntosh and Malcolm Mulholland. This book focuses on research in areas that are critical for Māori and for broader society. This volume canvases a range of social issues that are significant for a better understanding of the experience and social environment of Māori, and important in that they highlight the need to ensure research-based solutions to these issues. The majority of the book chapters deal with social problems. However, this book is not a call to a return of deficit research. Rather it is an opportunity to collectively provide power-centred, Māori-centred perspectives and solutions.

McIntosh, T. & Mulholland, M. (Eds) *Māori and Social Issues. NPM Edited Collections Volume 1*. Wellington: Huia.

MAI Review, the journal of the capability building programme completed publication with three issues in 2011, and all archive issues are available on www.review.mai.ac.nz. In 2012 the journal will evolve into the new title *MAI Journal: A New Zealand Journal of Indigenous Scholarship*, which will publish excellent research articles and commentaries on indigenous research in the context of Aotearoa New Zealand. Similar peer review protocols to *AlterNative* will be developed, and the journal will be a welcome addition to the publication options for the Māori and New Zealand PhD scholar, researcher and academic.

www.review.mai.ac.nz
www.journal.mai.ac.nz

Journal articles published by Ngā Pae o te Māramatanga journals in 2011

AlterNative Volume 7, Issues 1, 2 and 3.

Andreotti, V., Ahenakew, C. & Cooper, G. (2011). Epistemological Pluralism. *AlterNative: An International Journal of Indigenous Peoples*, 7(1), 40–50.

Barraco, L. (2011). “We fought for our land”: Miskitu Insurgency and the Struggle for Autonomy on Nicaragua’s Atlantic Coast (1981–1987). *AlterNative: An International Journal of Indigenous Peoples*, 7(3), 233–245.

Boulton, A., Gifford, H., Kauika, A. & Parata, K. (2011). Māori Health Promotion. *AlterNative: An International Journal of Indigenous Peoples*, 7(1), 26–39.

Chant, L. (2011). Whānau Ora: Hauora Māori Models for Kotahitanga/Co-Operative Co-Existence with Non-Māori. *AlterNative: An International Journal of Indigenous Peoples*, 7(2), 111–122.

Debelo, A. R. (2011). Contrast in the Politics of Recognition and Indigenous People’s Rights. *AlterNative: An International Journal of Indigenous Peoples*, 7(3), 258–271.

G/ao, H. K. (2011). Situation Report. Ju/’hoansi Kokxui Tihsi Kana Tihasi: Ju/’hoansi Language Barriers. *AlterNative: An International Journal of Indigenous Peoples*, 7(1), 65–67.

Gregory, A., Borell, B., McCreanor, T., Moewaka Barnes, A., Nairn, R., Rankine, J., Abel, S., Taiapa, K. & Kaiwai, H. (2011). Reading News about Māori: Responses from Non-Māori Media Audiences. *AlterNative: An International Journal of Indigenous Peoples*, 7(1), 51–64.

Henwood, W. & Henwood, R. (2011). Mana Whenua Kaitiakitanga in Action: Restoring the Mauri of Lake Ōmāpere. *AlterNative: An International Journal of Indigenous Peoples*, 7(3), 220–232.

Hodgetts, D., Nikora L. W. & Rua, M. (2011). Māori Men and the Indirect Procurement and Sharing of Prescription Medications. *AlterNative: An International Journal of Indigenous Peoples*, 7(2), 152–162.

Kara, E., Gibbons, V., Kidd, J., Blundell, R., Turner, K. & Johnstone, W. (2011). Developing a Kaupapa Māori Framework for Whānau Ora. *AlterNative: An International Journal of Indigenous Peoples*, 7(2), 100–110.

Kenney, C. M. (2011). Midwives, Women and their Families: A Māori Gaze: Towards Partnerships for Maternity Care in Aotearoa New Zealand. *AlterNative: An International Journal of Indigenous Peoples*, 7(2), 123–137.

- Ketsitlile, L. E. (2011). The Status of Literacy Education for the San of Botswana. *AlterNative: An International Journal of Indigenous Peoples*, 7(3), 196–206.
- Mayo, E. J. (2011). The Violence after “La Violencia”: The Guatemalan Maya and the United Nations Brokered Peace Accords of 1996. *AlterNative: An International Journal of Indigenous Peoples*, 7(3), 207–219.
- Mucina, D. (2011). Story as Research Methodology. *AlterNative: An International Journal of Indigenous Peoples*, 7(1), 1–14.
- Muthu, Y. & Grzeszczyk, G. (2011). Analysis of the Australian and Canadian Governments’ Aboriginal Policies. *AlterNative: An International Journal of Indigenous Peoples*, 7(1), 15–25.
- Nikora, L. W., Hodgetts, D., Carlson, T. & Rua, M. (2011). Māori and Medications: What Happens When the Pills Go Home? *AlterNative: An International Journal of Indigenous Peoples*, 7(2), 87–99.
- Paora, R., Tuiono, T. & Flavell, T. U. (2011). In conversation with Hawksley, C. & Howson, R. (2011). Tino Rangatiratanga and Mana Motuhake: Nation, State and Self-Determination in Aotearoa New Zealand. *AlterNative: An International Journal of Indigenous Peoples*, 7(3), 246–257.
- Penehira, M., Smith, L. T., Green, A. & Aspin, C. (2011). Mouri Matters: Contextualizing Mouri in Māori Health Discourse. *AlterNative: An International Journal of Indigenous Peoples*, 7(2), 177–187.
- Penney, L., Moewaka Barnes, H. & McCreanor, T. (2011). The Blame Game: Constructions of Māori Medical Compliance. *AlterNative: An International Journal of Indigenous Peoples*, 7(2), 73–86.
- Tinirau, R., Gillies, A. & Tinirau, R. (2011). Hōmai Tō Hono: Connecting Customary, Conventional and Spiritual Healing Practices within a Rural-Based Māori Community. *AlterNative: An International Journal of Indigenous Peoples*, 7(2), 163–176.
- Whitinui, P. (2011). The Treaty and “Treating” Māori Health: Politics, Policy and Partnership. *AlterNative: An International Journal of Indigenous Peoples*, 7(2), 138–151.
- Plus: Seven book reviews of internationally published texts, reviewed by international scholars.
- Hikuroa, D. C. H., Slade, A. T. & Gravley, D. M. (2011). Implementing Māori Indigenous Knowledge (Mātauranga) in a Scientific Paradigm: Restoring the Mauri to Te Kete Poutama. *MAI Review*, 2011(3), 1–9.
- Hoeata, C., Nikora, L., W. Li, W. W., Young-Hauser, A. & Robertson, R. (2011). Māori Women and Intimate Partner Violence: Some Sociocultural Influences. *MAI Review*, 2011(3), 1–12.
- Hook, G. R. & Raumati, L. P. (2011). A Validation of Māori Social Principles and the Global Fresh Water Crisis. *MAI Review*, 2011(1), 1–17.
- Hook, G. R. & Raumati, L. P. (2011). Cultural Perspectives of Fresh Water. *MAI Review*, 2011(2), 1–15.
- Kamutingondo, S., Groot, S., Hodgetts, D. & Nikora, L. W. (2011). Understandings and Social Practices of Medications for Zimbabwean Households in New Zealand. *MAI Review*, 2011(3), 1–17.
- Keegan, P., Keegan, T. T. & Laws, M. (2011). Online Māori Resources and Māori Initiatives for Teaching and Learning: Current Activities, Successes and Future Directions. *MAI Review*, 2011(1), 1–13.
- Lambert, S. (2011). Te Ahuwhenua and the ‘Sons of the Soil’: A History of the Māori-Farmer-of-the-Year Award. *MAI Review*, 2011(1), 1–13.
- Pohatu, T. W. (2011). Mauri: Rethinking Human Wellbeing. *MAI Review*, 2011(3), 1–12.
- Rapatahana, V. (2011). A Tribute to Te Kapunga Matemoana Dewes. *MAI Review*, 2011(1), 1–8.
- Ratima, M. & May, S. (2011). A Review of Indigenous Second Language Acquisition: Factors Leading to Proficiency in Te Reo Māori (the Māori language). *MAI Review*, 2011(1), 1–21.

Leadership Reflections

- Diamond, P. R. (2011). The Next Stage of Māori Art Education. *MAI Review*, 2011(2), 1–4.
- Matthews, N. (2011) Reflecting on Māori Academic Leadership. *MAI Review*, 2011(3), 1–4.
- Te Momo, O. F. (2011). Whakanekeneke Rangatira: Evolving Leadership. *MAI Review*, 2011(2), 1–4.
- Wikitera, K. (2011). Travelling, Navigating and Negotiating Māori Leadership Challenges in the 21st Century. *MAI Review*, 2011(2), 1–4.

Plus 6 articles in Te Kokonga – Workshop Corner, and original poetry works from 16 indigenous poets.

MAI Review, 2011, Issues 1, 2 and 3

Research Articles

- Edge, K., Nikora, L. W. & Rua, M. (2011). Different Coloured Tears: Dual Cultural Identity and Tangihanga. *MAI Review*, 2011(1), 1–16.

INTERNATIONAL COLLABORATIONS IN EXCELLENCE

Networking and supporting research collaborations, including internationally, remains an important focus of Ngā Pae o te Māramatanga. This was the second year of our partnership with Fulbright, enabling New Zealand scholars to further their research careers in the USA.



Natalie Coates joined some of the best minds in the world when she started at Harvard University in August. Natalie (Ngāti Awa, Te Arawa, Tuhoë, Ngāti Hine) was the 2011 Fulbright-Ngā Pae o te Māramatanga Graduate Award recipient, enabling her to study a Master of Laws in human rights and indigenous law at the prestigious university.

Only one such award is given each year to a graduate student whose area of study fits within one of our research themes. The successful applicant must show academic excellence, leadership potential and the ability to be a cultural ambassador for New Zealand.

Natalie chose Harvard because of its reputation as one of the best universities in the world. They have amazing resources and professors, and she will be alongside some of the brightest and most accomplished students in the world.



Pefi Kingi presented her decades of work on developing a quality assurance framework for Pacific cultural practices in healthcare at the Cross-Cultural Health Care Conference in Honolulu, Hawai'i in October. Pefi's trip was supported by a Fulbright-Ngā Pae o te Māramatanga Travel Award

in Indigenous Development, designed for New Zealand academics, artists or professionals to present their work in areas of indigenous development to audiences in the USA. Pefi is of Niuean heritage and from Auckland.

Others awarded a Fulbright-Ngā Pae o te Māramatanga award during 2011 and due to travel in 2012 are:

University of Otago law academic **Jacinta Ruru** (Ngāti Raukawa, Ngāti Ranginui, Ngāti Maniapoto) was awarded the Fulbright-Ngā Pae o te Māramatanga Senior Scholar Award. She will undertake research into indigenous challenges to western property law at Lewis & Clark College in Portland, Oregon and the Sandra Day O'Connor College of Law at Arizona State University in Tempe.

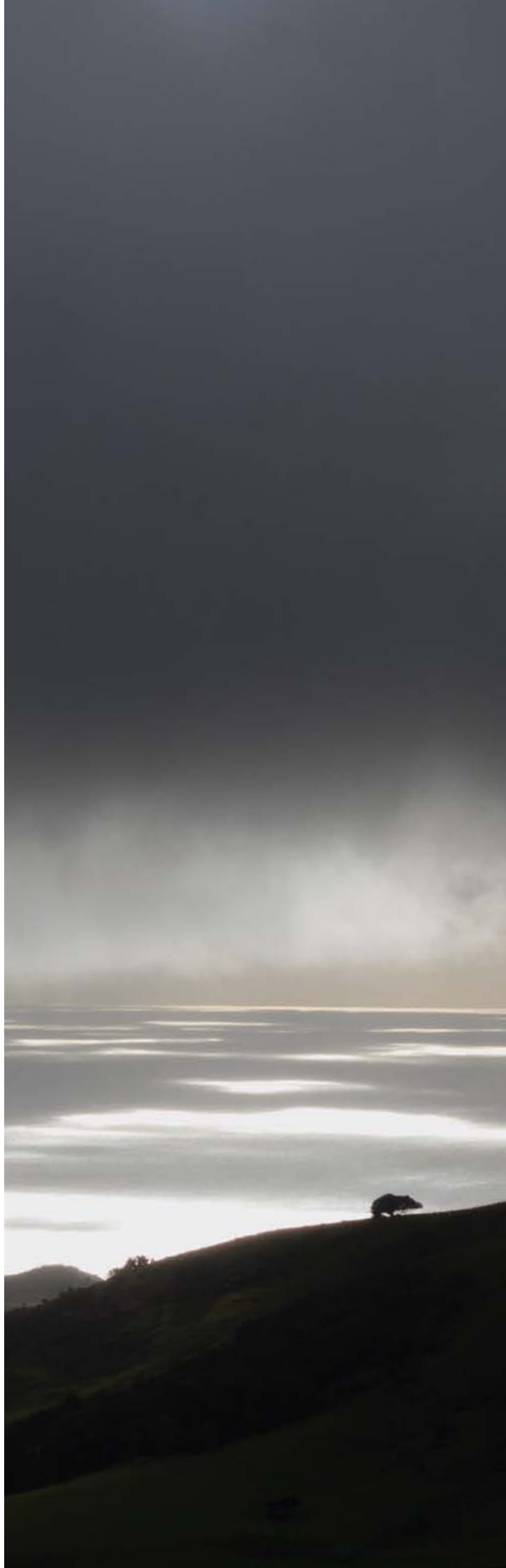


Spencer Charles Lilley from Massey University and **Tia Neha** from the University of Otago both received Fulbright-Ngā Pae o te Māramatanga Travel Awards in Indigenous Development.

Ngā Pae o te Māramatanga supported 14 further scholars to present their research and meet, collaborate and network with international researchers during 2011:

- **Paul Whitinui**, University of Canterbury, 9th Hawai'i International Conference on Education, 4–7 January 2011, Honolulu, Hawai'i
- **Dr Ocean Mercier**, Victoria University of Wellington, World Indigenous Peoples Conference on Education, 14–18 August 2011, Cusco, Peru
- **Vincent Malcolm-Buchanan**, University of Waikato, Death Down Under Conference, 27–28 June 2011 Sydney and IUAES/AAS/ASAANZ Conference 2011, 5–8 July 2011, Perth, Australia
- **Dr Mere Kepa**, The University of Auckland, 9th Asia/Oceania Congress of Geriatrics and Gerontology, 23–27 October 2011, Melbourne, Australia
- **Lorraine Dixon**, Maanaki Whenua, The 14th International River Symposium: The Value of Rivers, 26–29 September 2011, Brisbane, Australia

- **Dr Laurie Morrison**, AUT University, 25th European Health Psychology Conference, Engaging with Other Health Professions: Challenges and Perspectives, 20–24 September 2011, Crete, Greece
- **Belinda Borell**, Massey University, The Pedagogy of Privilege Conference, 15–16 August 2011, Denver, USA
- **Dr Rawiri Taonui**, Sharing Cultures 2011, 2nd International Conference on Intangible Heritage, 3–6 July 2011, Tomar, Portugal
- **Dr Maria Bargh**, Victoria University of Wellington, Australasian Agri-food Research Network Conference, 6–8 December 2011, Canberra, Australia
- **Ella Henry**, AUT University, 3rd International Social Innovation Research Conference, 12–13 September 2011, London, England and 6th European Conference on Innovation and Entrepreneurship, 15–16 September 2011, Aberdeen, Scotland
- **Hamuera Kahi**, University of Canterbury, 2nd Mobilities Symposium: Toward a Movement-driven Social Science in Aotearoa, 15–16 July 2011, Palmerston North
- **Phillip Borell**, University of Canterbury, 3rd Mobilities Symposium: Toward a Movement-driven Social Science in Aotearoa, 15–16 July 2011, Palmerston North
- **Dr Margaret Taurere**, The University of Auckland, World Indigenous Peoples Conference on Education, 14–18 August 2011, Cusco, Peru
- **Professor Charles Royal**, Visiting Fellow, Royal Holloway, University of London, UK, November 2011



BOARD OF DIRECTORS



Sir Tīpene O'Regan

Ngāi Tahu, Chairman

Sir Tīpene is the former Chair of the Ngāi Tahu Māori Trust Board, Ngāi Tahu Holdings Corporation, Māwhera Incorporation, Te Ohu Kai Moana, the Sealord Group Ltd and Deputy Chair of Transit New Zealand. He is a previous director of Television New Zealand, Meridian Energy and the founding Chair of Te Tapuae o Rehua Ltd. Sir Tīpene is a Fellow of The University of Auckland, Adjunct Professor at Ngāi Tahu Research Centre, University of Canterbury and holds honorary doctorates from the University of Canterbury, Lincoln University and Victoria University Wellington. He is a Distinguished Fellow of the Institute of Directors. He is joint chair of the Constitutional Advisory Panel convened by the New Zealand Government.



Associate Professor Jan Crosthwaite

Associate Professor Crosthwaite is Dean of Arts at The University of Auckland. Holding a PhD in Philosophy, Jan's teaching and research interests include bioethics, feminism, applied ethics and social philosophy. At The University of Auckland, she has served on the Academic Programmes Committee, the Teaching and Learning Quality Committee, the Board of Studies for General Education and the Curriculum Commission, and was an elected lecturers' representative on the University Council 2007–2011.



Distinguished Professor Jane Harding

A paediatrician specialising in newborn intensive care, Professor Harding is Deputy Vice Chancellor (Research) and Professor of Neonatology at The University of Auckland. An international authority on foetal growth, she has served on the Health Research Council of New Zealand, the Royal Australasian College of Physicians and the Council of the International Society for the Developmental Origins of Health and Disease. A Fellow of the Royal Society of New Zealand, Professor Harding was made an Officer of the New Zealand Order of Merit in 2002.



Professor Hirini Matunga

Ngāi Tahu, Ngāti Porou, Ngāti Kahungunu, Rongowhakaata, Ngāti Paerangi (Atiu, Cook Islands)

Professor Matunga is Assistant Vice Chancellor (Māori and Pacifica) and Professor of Indigenous Planning at Lincoln University. He is the former Director of Lincoln University's Centre for Māori and Indigenous Planning and Development; former Associate Director of the Centre for Māori Studies and Research, Lincoln University; past Convenor of the Indigenous Peoples Executive of the World Archaeological Congress, and was a Trustee on the Tautuku Waikawa Māori Lands Trust.



Mrs Alison Paterson

Mrs Paterson is chair of BPAC NZ Ltd, Ambulance NZ Oversight Committee, NRCGD (The University of Auckland), Stevenson Agriculture Ltd and Farm IQ. She is a Fellow of The University of Auckland and Pro Chancellor of Massey University Council. She is on the Board of Abano Healthcare Ltd and Vector Ltd. She was previously chairman of Landcorp Ltd, Metrowater Ltd, Waitemata Health Ltd and DHBNZ, Deputy Chair and Director of the Reserve Bank and Health Waikato Ltd, and a Barnardos councillor. She holds an Honorary Doctorate of Commerce from Massey University and is a Distinguished Accredited Fellow of the Institute of Directors.



Mr Jim Peters

Ngāti Wai, Ngāti Hine and Ngā Puhi

Mr Peters is Pro Vice-Chancellor (Māori) at The University of Auckland. He is on the board of NRCGD (The University of Auckland). In the past, he has been Chair of the Northland Regional Council and served on the National Council of Local Government New Zealand and the Animal Health Board Members' Committee. He was Head of Department of History, Geography and Social Studies at Mt Albert Grammar School and Principal of Northland College in Kaikohe. Mr Peters was elected to Parliament representing the New Zealand First Party from 2002–2005.



Mr Mike Stevens

Ngāti Raukawa, Ngāti Kauwhata

Mr Stevens is a former member of the New Zealand Universities Academic Audit Unit and has been an advisor to the Foundation for Research, Science and Technology. He has held a variety of senior public and private sector positions and now runs his own consulting company, Taiaho Limited.



International Research Advisory Panel

Professor Sir Mason Durie

(Ngāti Kauwhata, Ngāti Raukawa, Rangitane)
Deputy Vice-Chancellor and Assistant Vice-
Chancellor (Māori and Pasifika) at Massey
University, New Zealand

Associate Professor Harald Gaski

(Sámi)
University of Tromsø, Norway

Dr Maris O'Rourke

International education consultant, New Zealand

Rose von Thater-Braan

(Tuscarora, Cherokee)
Director of Silver Buffalo Consulting, USA

Professor Martin Nakata

(Torres Strait Islander)
University of New South Wales, Australia

Professor Greg Cajete

(Tewa, Santa Clara Pueblo)
University of New Mexico, United States

Research Committee

Professor Charles Royal (Chair) Director,
Ngā Pae o te Māramatanga

Dr Dan Hikuroa (Deputy Chair) Research
Director, Ngā Pae o te Māramatanga

Members

Dr James Ataria, researcher, Landcare Research
Manaaki Whenua

Dr Brett Graham, artist and sculptor

Associate Professor Trish Johnston, Head of
School of Indigenous Graduate Studies, Te Whare
Wānanga o Awanuiārangī

Dr Joanna Kidman, Co-director of He
Pārekereke, School of Education, Victoria
University of Wellington

Dr Te Kani Kīngi, Director of Te Mata o Te Tau,
the Academy for Māori Research and Scholarship,
Massey University

Dr Kepa Morgan, Senior Lecturer, Department
of Civil and Environmental Engineering,
The University of Auckland

Associate Professor Linda Waimarie Nikora,
Department of Psychology, University of Waikato

Associate Professor Nin Tomas, Faculty of Law,
The University of Auckland

OUR TEAM

Director's Office

Senior Management Team



Professor Charles
Te Ahukaramū Royal
Director



Daniel Patrick
Executive Director



Dr Daniel Hikuroa
Research Director

Research Team



Dr Joseph Te Rito
Senior Research Fellow –
Indigenous Development



Dr Marilyn Tangi Ina McPherson
Senior Research Fellow – Research
Performance and Policy

Business Team



Marie-Chanel Berghan
Business Manager



Premika Sirisena
Centre Coordinator



Jane Rangiwahia
Programme Coordinator
– Directors and Grants
and Awards



Honorine Franswah
Centre Administrator

OUR TEAM

Publications and Communications Team



Dr Helen Ross
Publications and
Communications Manager



Dr Katharina Bauer
Journal and Publications
Coordinator



Kimiora Brown
Journal and Publications
Coordinator



Gretchen Carroll
Communications
Coordinator



Donna Gardiner
Research and Community
Coordinator

Systems Development Team

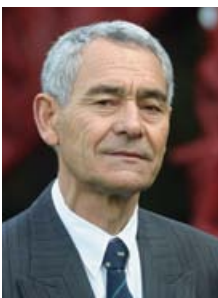


Dr Tim West-Newman
Systems Development
Manager



Josie McClutchie
Production Coordinator
– AV

Until June 2011



Professor Leslie Williams



Dr Adreanne Ormond



Phoebe Fletcher

2011 Principal Investigators



Dr Pam Bennett
The University
of Auckland



Dr Amohia Boulton
Whakauae Research for Māori
Health and Development



Dr Corey Bragg
University of Otago



Dr Lorna Dyall
The University
of Auckland



Arapata Hakiwai
Museum of New Zealand
Te Papa Tongarewa



Dr Aroha Harris
The University
of Auckland

PHOTO: NEIL PARDINGTON



Dr Rāwinia Higgins
Victoria University
of Wellington



Dr Daniel Hikuroa
The University
of Auckland



Ngāpare Hopa
Jefferson Rakau Ltd



Dr Marion Johnson
University of Otago



Dr Jane Kitson
Te Ao Mārama Inc.



Wayne Ngata
Tairāwhiti Polytechnic



Dr Shaun Ogilvie
Eco Research
Associates Ltd



Associate Professor
Pāpārangi Reid
Te Kupenga Hauora Māori



Associate Professor
Poia Rewi
University of Otago



Dr Tom Roa
University of Waikato



Professor Charles Royal
Ngā Pae o te Māramatanga



Professor Graham Smith
Te Whare Wānanga
o Awanuiārangi



Dr Ngāhuia Te Awekotuku
University of Waikato



Dr Joseph Te Rito
Ngā Pae o te
Māramatanga



Associate Professor
Nin Tomas The University
of Auckland



Associate Professor
Huia Tomlins-Jahnke
Massey University



Dr Jason Turuwhenua
The University
of Auckland



Dr Hēmi Whaanga
University of Waikato



Professor Mike Walker
The University
of Auckland

PARTICIPATING RESEARCH ENTITIES IN NGĀ PAE O TE MĀRAMATANGA

Ngā Pae o te Māramatanga is a national network of institutions, covering multiple disciplines and communities. Our research partners are essential to our success. We have sixteen partner entities:



Te Whare Wānanga o Otago



AUT University

Auckland War Memorial Museum

Lincoln University

Manaaki Whenua Landcare Research

Massey University

Te Papa Tongarewa

Te Tapuae o Rēhua

Te Taihū o Ngā Wānanga

Te Whare Wānanga o Awanuiārangi

Te Wānanga o Aotearoa

The University of Auckland acting through
Te Wānanga o Waipapa

The University of Canterbury

The University of Otago acting through
the Eru Pomare Health Research Centre

The University of Waikato acting through
its Māori Education Research Institute

Victoria University Wellington acting through
He Pārekereke: The Institute for Research
and Development in Education; and the Māori
Business unit, School of Management

Waikato Raupatu Lands Trust acting through
Waikato-Tainui College for Research and
Development



FINANCIAL STATEMENTS

Statement of Income and Expenditure for the year ended 31 December 2011

		Notes	Actual 2011 12 Months \$	Actual 2010 12 Months \$
Operating income				
	Tertiary Education Commission grant receipts	3b	5,360,576	5,330,960
	Change in year end research obligations	1c, 3c	740,099	219,347
	Tertiary Education Commission grant income		6,100,675	5,550,307
	Other grant receipts	6	22,320	196,549
	Change in year end research obligations	4	(62,674)	164,884
	Net other grant income		(40,354)	361,433
Total operating income			6,060,321	5,911,740
Expenditure				
	Salary and salary-related costs		1,406,855	1,386,419
	Overheads	7	585,247	654,584
	Other operating costs		755,831	1,102,999
	Subcontractors	8	3,311,629	2,763,372
	Equipment rental		759	4,366
Total operating expenditure			6,060,321	5,911,740
Net surplus / (deficit)			0	0

FINANCIAL STATEMENTS

Ngā Pae o te Māramatanga
New Zealand's Indigenous Centre of Research Excellence

Balance Sheet as at 31 December 2011

		Notes	Actual 2011 12 Months \$	Actual 2010 12 Months \$
Assets				
Current Assets				
	Research funds held by The University of Auckland	1c, 3c, 4, 5	1,798,202	2,525,915
Total current assets			1,798,202	2,525,915
Total assets			1,798,202	2,525,915
Current Liabilities				
	Research obligations	1c, 3c, 4	1,798,202	2,525,915
Total current liabilities			1,798,202	2,525,915
Total liabilities			1,798,202	2,525,915

The accompanying Notes to the Financial Statements form part of and should be read in conjunction with these financial statements

Signed on behalf of the Board



Chairman



Director

Notes to the Financial Statements for the year ended 31 December 2011

1. Statement of Accounting Policies

Basis of Preparation

Ngā Pae o te Māramatanga (National Institute of Research Excellence for Māori Development and Advancement) is a Centre of Research Excellence and is hosted as an Institute within The University of Auckland. Ngā Pae o te Māramatanga has its own Board of Governance which includes members external to The University of Auckland.

These financial statements are general purpose financial statements that comprise a statement of income and expenditure and a balance sheet.

The financial statements have been prepared in New Zealand currency, on the basis of historical cost, and in accordance with generally accepted accounting practice in New Zealand.

The financial statements are for the 12 months ended 31 December 2011. The comparative figures are for the 12 months ended 31 December 2010.

These unaudited financial statements have been extracted from the audited financial statements of The University of Auckland and have been prepared in accordance with following accounting policies.

(a) Revenue

Research grants are recognised as revenue upon completion of services for which the grant was made. Where obligations are attached to a grant, a liability is recognised. Once the obligation is discharged, the grant is recognised as revenue.

(b) Taxation

Ngā Pae o te Māramatanga is exempt from income tax as it is hosted by The University of Auckland which is exempt from income tax.

All amounts are shown exclusive of Goods and Services Tax (GST).

GST is accounted for by The University of Auckland outside of the financial statements for Ngā Pae o te Māramatanga.

(c) Changes in Accounting Policy

Accounting policies have been applied on a basis consistent with those of the previous period.

2. Tertiary Education Commission Grant

(a) Funding Levels

Ngā Pae o te Māramatanga is primarily funded by the Tertiary Education Commission. Funding is approved until 30 June 2014. Approved levels are:

Approved and received for half year ending 30 June 2008	\$1,773,333
Approved and received for year ending 30 June 2009	\$5,330,960
Approved and received for year ending 30 June 2010	\$5,330,960
Approved and received for the year ending 30 June 2011	\$5,330,960
Approved for year ending 30 June 2012	\$5,419,809
Approved for year ending 30 June 2013	\$5,327,976
Approved for year ending 30 June 2014	\$5,048,145

Notes to the Financial Statements for the year ended 31 December 2011

		Actual 2011 12 Months \$	Actual 2010 12 Months \$
(b)	Tertiary Education Commission		
	Grant for the 12 months ending 31 December 2011	5,360,576	5,330,960
(c)	Tertiary Education Commission – Research Funds held by The University of Auckland		
	Research obligations at the beginning of the year	2,567,964	2,787,311
	Change in research obligations	(740,099)	(219,347)
	Change in Capital Equipment Fund	(50,288)	0
	Research obligations at the end of the year	1,777,577	2,567,964

4	Other Research Funds held as Research Obligations		
	Research obligations at the beginning of the year	(42,049)	122,835
	Research Funds returned to HRC	0	0
	Change in research obligations	62,674	(164,884)
	Research obligations at the end of the year	20,625	(42,049)
5	Commitments		
	There are outstanding commitments of \$3,167,896 for signed contracts against Research Funds held for the Research, Capability Building and Knowledge Exchange programmes at balance date. (2010:\$2,781,457)		
6	Other Revenue		
	Total of other grants received.	22,320	196,549
7	Overheads		
	Overheads paid from Tertiary Education Commission Grant income	585,247	578,183
	Overheads paid from other grant income	0	76,401
	Total	585,247	654,584
8	Subcontractors		
	Payments to subcontractors are for contracted research, knowledge exchange and capability building projects for all participating entities.		
9	Operating Expenditure		
	Ngā Pae o te Māramatanga did not incur any interest, audit fees or write off any bad debts expenses during the year (2011 nil).		

PUBLICATIONS AND OTHER OUTPUTS

Journals

Ngā Pae o te Māramatanga. (2011). *AlterNative: An International Journal of Indigenous Peoples*, 7 (1). June 2010.

Ngā Pae o te Māramatanga. (2011). *AlterNative: An International Journal of Indigenous Peoples*, 7 (2). November 2010.

Ngā Pae o te Māramatanga. (2011). *AlterNative: An International Journal of Indigenous Peoples*, 7 (2). December 2010.

Ngā Pae o te Māramatanga. (2011). *MAI Review*, 2010 (1). April 2010.

Ngā Pae o te Māramatanga. (2011). *MAI Review*, 2010 (2). August 2010.

Ngā Pae o te Māramatanga. (2011). *MAI Review*, 2010 (3). December 2010.

Newsletters

Ngā Pae o te Māramatanga. (2011). *Te Pūwānanga* (Newsletter) Issue 5. June 2011.

Ngā Pae o te Māramatanga. (2011). *Te Pūwānanga* (Newsletter) Takurua – Winter Issue.

Ngā Pae o te Māramatanga. (2011). *Te Pūwānanga* (Newsletter) Kōanga – Spring Issue.

Ngā Pae o te Māramatanga. (2011). *Te Pūwānanga* (Newsletter) Raumati – Summer Issue.

Books

McIntosh, T. & Mulholland, M. (Eds) *Māori and Social Issues. Ngā Pae o te Māramatanga Edited Collections, Volume 1*. Wellington: Huia.

McRae, J. (2011). *Ngā Mōteatea: An Introduction. He Kupu Arataki* (H. Jacob, Trans.). Auckland: Auckland University Press.

Mutu, M. (2011). *The State of Māori Rights*. Wellington: Huia Publishers.

Tamapara, E. A. (2011). *Whatu Kakahu: Māori Cloaks*. Wellington: Te Papa Press.

Whitiniui, P. (2011). *Kia Tangi Te Titi: Permission to Speak*. Wellington: NZCER Press.

Book Chapters

Boulton, A., Gifford, H., Tamehana, J. (2011). Resilience as a Conceptual Framework for Understanding the Māori Experience: Positions, Challenges and Risks. In T. McIntosh. & M. Mulholland (Eds.), *Māori and Social Issues* (pp. 283–300). Wellington, New Zealand: Huia Publishers.

Groot, S., Hodgetts, D., Nikora, L. W. & Rua, M. (2011). Māori and Homelessness. In T. McIntosh & M. Mulholland (Eds.), *Māori and Social Issues* (pp. 235–248). Wellington, New Zealand: Huia Publishers.

Kingi, T. K. R. (2011). Māori Mental Health: Past, Present and Future In T. McIntosh & M. Mulholland (Eds.), *Māori and Social Issues* (pp. 89–108). Wellington, New Zealand: Huia Publishers.

McIntosh, T. K. D. (2011). Marginalisation: A Case Study: Confinement. In T. McIntosh & M. Mulholland (Eds.), *Māori and Social Issues* (pp. 263–282). Wellington, New Zealand: Huia Publishers.

McKinley, E. H., T. K. (2011). Māori Education and Achievement. In T. McIntosh. & M. Mulholland (Eds.), *Māori and Social Issues* (pp. 49–66). Wellington, New Zealand: Huia Publishers.

Te Rito, J. S. & Nuku, P. (2011). Korokoro Kīwaha: Teaching Māori Language by Radio. In M. E. Romero-Little, S. J. Ortiz, T. L. McCarty & R. Chen (Eds.), *Indigenous Languages across the Generations – Strengthening Families and Communities* (pp. 207–222). Tempe, Arizona: Arizona State University Centre for Indian Education.

Peer-Reviewed Journal Articles

- Boulton, A., Gifford, H., Kauika, A., & Parata, K. (2011). Māori Health Promotion. *AlterNative: An International Journal of Indigenous Peoples*, 7(1), 26–39.
- Carpenter, L. (2011). Reviled in the Record: Thomas Logan, and Origins of the Cromwell Quartz Mining Company. *Journal of Australasian Mining History*, 9, 36–53.
- Edge, K., Nikora, L. W. & Rua, M. (2011). Different Coloured Tears: Dual cultural identity and tangihanga. *MAI Review*, 2011(1), 1–16.
- Hikuroa, D., Morgan, K., Durie, M., Henare, M. & Robust, T. T. (2011). Integration of Indigenous Knowledge and Science. *The International Journal of Science in Society*, 2(2), 9.
- Hikuroa, D. C. H., Slade, A. T. & Gravely, D. M. (2011). Implementing Māori Indigenous Knowledge (Mātauranga) in a Scientific Paradigm: Restoring the Mauri to Te Kete. *MAI Review*, 2011(3), 1–9.
- Hoeta, C., Li, W. W., Nikora, L. W., Robertson, N., & Young-Hauser, A. (2011). Māori Women and Intimate Partner Violence: Some Sociocultural Influences. *MAI Review*, 2011(3), 1–3.
- Kamutingondo, S., Groot, S., Hodgetts, D. & Nikora, L. W. (2011). Understandings and Social Practices of Medications for Zimbabwean households in New Zealand. *MAI Review*, 2011(3), 1–17.
- Kennedy, D. M. (2011). Forensic Dentistry and Microbial Analysis of Bite Marks. *Australian Police Journal*, 2011(March), 6–15.
- Miller, T., Patrick, D. & Ormrod, D. (2011). Hand Decontamination: Influence of Common Variables on Hand-Washing Efficiency. *Healthcare Infection*, 16(1), 18–23.
- Muru-Lanning, M. (2011). The Analogous Boundaries of Ngaati Mahuta, Waikato-Tainui and Kingitanga. *The Journal of the Polynesian Society*, 120(1), 9–42.
- Norman, A. M., Miles-Chan, J. L., Thompson, N. M., Breier, B. H., & Huber, K. (2011). Postnatal Development of Metabolic Flexibility and Enhanced Oxidative Capacity After Prenatal Undernutrition. *Reproductive Sciences*, 2011(December).
- Rodley, C. (2011). tRNA gene identity affects nuclear positioning. *PLoS One*, 6(12), 1–6.

Sakamoto, H. (2011). Researching Kapa Haka and its educational meanings in today's Aotearoa/ New Zealand: Weaving methodologies, perspectives and decency. *International Journal of the Arts in Society*, 6, 5–15.

Turuwhenua, J. (2011). An Eye for Modeling Visual Distortion in Central Serous Retinopathy. *Optometry and Vision Science*, 88(11).

Wikitera, K. (2011). Travelling, Navigating and Negotiating, Māori Leadership Challenges in the 21st Century. *MAI Review* 2011(2), 1–4.

Professional and Technical Reports

Reynolds, P. (2011). *He Ringa Raupa Māori Sawmill Workers Report* (No. 4). Whanganui, New Zealand: Te Atawhai o te Ao Independent Māori Institute for Environment & Health.

Smith, C. R. P. (2011). *Kohikohia Te Ora Māori Healers Report: Perspectives on Involuntary Chemical Exposures and Environmental Pollution* (No. 5). Whanganui, New Zealand: Te Atawhai o te Ao Independent Māori Institute for Environment & Health.

Ngā Pae o te Māramatanga Research Reports

All reports first published online in 2011 and available at http://www.maramatanga.co.nz/projects/project_publications

Bishop, R. (2008). *Effective leadership for educational reform: Decision-making by school leaders when seeking to sustain educational reform gains*. Auckland, New Zealand: Ngā Pae o te Māramatanga.

Carter, L., Kamau, R. & Barrett, M. (Eds). (2011). *Literature Review and Programme Report: Te Pae Tawhiti Māori Economic Development Programme*. Auckland: Ngā Pae o te Māramatanga.

Dyall, L. (2009). *The impact of gambling on Māori*. Auckland: Ngā Pae o te Māramatanga.

Hikuroa, D. C. H. (2011). *Harvesting the Fruits of Papatuanuku – A Kaitiaki Approach to Geothermal Development*. Auckland, New Zealand: Ngā Pae o te Māramatanga.

Lyver, P. (2008). *Adélie Penguin Population Response to Climate Change in the Ross Sea, Antarctica: Penguin Population Response*. Auckland: Ngā Pae o te Māramatanga.

Morgan, K. & Manuel, R. (2006). *Essential Services for Isolated Communities*. Auckland: Ngā Pae o te Māramatanga.

Pehi, P. (2008). *The Restitution of Marae and Communities through Mahinga Kai: Building the Management of Māori Customary Fisheries*. Auckland: Ngā Pae o te Māramatanga.

Smith, C. (2006). *Kaupapa Māori Methods: Sharing our Experiences*. Auckland: Ngā Pae o te Māramatanga.

Smith, G. (2011). *Te Pae Tawhiti: Māori Economic Development*. Auckland: Ngā Pae o te Māramatanga.

Rito, J. (2009). *Kia Areare ki ngā Reo o ngā Tīpuna: Strengthening Rongomaiwahine-Kahungunu Dialects through Archival Recordings*. Auckland: Ngā Pae o te Māramatanga.

Papers in Conference Proceedings

Carpenter, L. (2011). *Beyond Spectacular Beauty: The Heritage Experience at the Central Otago Mining Town of Bendigo*. Paper presented to the On The Surface: The Heritage of Mines and Mining Conference, Innsbruck, Austria.

Logan-Riley, A. (2011). *My Koro Was in the Battalion: Facilitating Inter-Generational Knowledge Transfer and Community Revitalisation through Community-Based, Iwi-Centred Research*. Paper presented to the He Rau Tumu Kōrero 2011, Māori Historians' Symposium. The University of Auckland, Auckland, New Zealand.

McDowell, T. (2011). *He Paremata Māori: The Search for a Māori Parliament*. Paper presented to the World Parliament of Indigenous Peoples: First Round Table, Tumkur, India.

McDowell, T. (2011). *My Country My People: The Māori People of Aotearoa/New Zealand*. Paper presented to the World Parliament of Indigenous Peoples: First Round Table, Tumkur, India.

Sizemore, R. J., Zhang, R., Lin, N., Wastney, T., Reynolds, J. N. J. & Oorschot, D. E. (2011). *Rat Striatal Spiny Projection Neurons Have Markedly More Synapses on Their Somata and Primary Dendrites Compared to Striatal Cholinergic Interneurons*. Paper presented to the Proceedings of the International Australasian Winter Conference on Brain Research, Queenstown, New Zealand.

Sakamoto, H. (2011). Researching Kapa Haka and its Educational Meanings in Today's Aotearoa/New Zealand: Weaving Methodologies, Perspectives and Decency. *The International Journal of the Arts in Society*, 6(3), 57–66.

Tamapara, A. (2011). *Whatu Raranga a Kiwa: Understanding and Uniting Māori and Pacific Textiles*. Museum of New Zealand/Te Papa Tongarewa, Wellington, New Zealand.

Yuen, B., Hyun, J. K., & Walker, M. M. (2011). *Characterization of Candidate Magnetite-Based Magnetoreceptor Cells in the Olfactory Organ of Rainbow Trout*. Paper presented to the Royal Institute of Navigation Conference on Orientation and Navigation – Birds, Humans and Other Animals. University of Reading, UK.

Conference, Seminar and Wānanga Papers and Presentations

Boulton, A. (2011). *Presentation of Full Research Findings to the Te Oranganui Iwi Health Authority Hui A Iwi*. Presentation at Whangaehu Marae.

Boulton, A. (2011). *We Can't Actually Help Them Unless They Want to be Helped: The Extent to which Māori Health Service Providers Contribute to Building More Resilient Whānau*. Presentation to the 7th Health Services and Policy Research Conference, Adelaide.

Boulton, A., Gifford, H., Tamehana, J. & Cumming, J. (2011). *The Contribution of Māori Health Service Approaches to Whānau Resilience: Findings from a Collaborative Research Project*. Presentation to the Ngā Pae o te Māramatanga Horizons of Insight Seminar Series.

Carpenter, L. (2011). *Beyond a Spectacular Beauty: The Heritage Landscape at Bendigo, Central Otago*. Presentation to the On the Surface: The Heritage of Mines and Mining Conference.

Carpenter, L. (2011). *The Hard Men of Bendigo: Confronting the Mythology of the Central Otago Gold Rush*. Paper presented to the Australian Mining History Association 17th Annual Conference.

Carter, L., Jefferies, R. & Collins, I. (2011). *Panel Four Discussion: Collaboration*. Presented to the 2011 Critical and Sensitive Research Issues Symposium (CSRI) Māori Economic Development, Wellington.

Cheeseman, J. F., Fewster, R.M., & Walker, M. M. (2011). *Semilunar Clock Mechanism Controlling Foraging Behaviour: A View from the Pacific*. Paper presented to the XII Congress of the European Biological Rhythms Society (EBRS).

- Dewes, W. (2011). *Whakamahia – Kia Taea What We Need to Succeed*. Presentation to the 2011 Critical and Sensitive Research Issues Symposium (CSRI) Māori Economic Development. Wellington.
- Cornell, S. (2011). *Critical and Sensitive Research Issues*. Presentation to the 2011 Critical and Sensitive Research Issues Symposium (CSRI) Māori Economic Development. Wellington.
- Dimitrov, D. K. (2011). *The Meaning of Indigenous Sustainable Development: a Qualitative Study of a Māori & First Nations Senior Financial Officer*. Presentation to the Te Toi o Matariki Māori Graduate Conference.
- Dyall, L. (2011). *Whānau Ora: Visualising a New Future*. Seminar presented at Waipapa Marae, The University of Auckland.
- Everitt, K., Henry, E. & Roderick, M. (2011). *Panel Two Discussion: Capacity and Capability*. Presentation at the 2011 Critical and Sensitive Research Issues Symposium (CSRI) Māori Economic Development, Wellington.
- Gabel, K. (2011). *Kei Wareware i a Tātou te Ūkaipō – Lest we Forget the Night-Feeding Breast: Māori Mothering Ideologies in Contemporary Aotearoa/New Zealand*. Presentation at the 6th Australian International Conference on Motherhood: Mothers at the Margin Conference.
- Hikuroa, D. C. H., Begg, J., Bradshaw, D., Waikerepuru, H. & Waikerepuru, T. (2011). *How did Māori Perceive Geology?* Presentation at the Geosciences 2011 Conference.
- Hikuroa, D. C. H. (2011). *Workshop on Kaitiaki Geothermal Development Model*. Presentation at the Geothermal Resources Council Annual Meeting.
- Hikuroa, D. (2011). *Symposium Summary*. Presentation at the 2011 Critical and Sensitive Research Issues Symposium (CSRI) Māori Economic Development, Wellington.
- Houpapa, T. (2011). *Local Solutions, Local Opportunities*. Presentation to the 2011 Critical and Sensitive Research Issues Symposium (CSRI) Māori Economic Development, Wellington.
- Howard, L. (2011). *Meeting the Emotional Needs of Children with Developmental Disabilities and Challenging Behaviour*. Paper presented at the European Network of Social and Emotional Competence in Children Conference.
- Kēpa, M. (2011). *Life and Living in Advanced Age. A Cohort Study in New Zealand (LILACS NZ). Collaborative Quantitative Longitudinal Research*. Seminar presented at Waipapa Marae, The University of Auckland.
- Kennedy, D. M. (2011). *Microbial Analysis of Bite Marks by Sequence Comparison of Streptococcal DNA*. Presentation to the American Academy of Forensic Sciences 64th Annual Scientific Meeting.
- Kennedy, D. M. (2011). *An Overview of Forensic Odontology*. Seminar presented at the Anatomy and Structural Biology Departmental Seminar Series.
- Kennedy, D. M. (2011). *Putting the Science Back into Forensics*. Paper presented to the New Zealand Microbiological Society Annual Conference.
- King, P. R. W. (2011). *Exploring the Nature of Intimate Relationships: A Māori perspective*. Presentation to the New Zealand Psychological Society Annual Conference.
- King, P. R. W. & Hoeata, C. (2011). *Exploring the Nature of Intimate Relationships: A Māori perspective*. Presentation to the 9th Biennial Conference of Asian Association of Social Psychology.
- Kingi, P. (2011). *"MITAKI?" Quality Assurance: A Conversation Towards a Pacific-NZ Framework to Ensure Best Pacific-NZ Practices in Healthcare Provision for Pacific Peoples in Aotearoa New Zealand*. Presentation to the 2nd Cross Cultural Health Care Conference.
- Kingi, T. K. & Waiti, J. (2011). *Whānau Resilience: A Case Study*. Seminar presented at Waipapa Marae, The University of Auckland.
- Kiro, C., Te Momo, F., Moewaka-Barnes, H., George, L. Rehu-Murchie, E. & Wirihana, R. (2011). *Te Ara Oho Mairangi – The Celestial Beacon: Navigating Māori Research*. Presentation at the Massey University Library, Kakano Rua.
- Logan-Riley, A. (2011). *The D Company History Project: We Will Remember Them*. Presentation to the Ngati Kahungunu Iwi Incorporated Board and members of the public.
- Malcolm-Buchanan, V. (2011). *Dressed in Life and Death; of Clothing and Care-Giving of Tūpāpaku in te Ao Māori*. Presentation to the Death Down Under Conference.

- Malcolm-Buchanan, V. (2011). *Touching Life and Death: Artefacts and Objects of the Māori Funerary Process*. Presentation to the IUAES/AAS/ASAANZ Conference.
- McCabe, J. O. A. (2011). *Combined Keynote and Day One Wrap Up*. Presentation to the 2011 Critical and Sensitive Research Issues Symposium (CSRI) Māori Economic Development. Wellington.
- McDowell, T. (2011). *He Paremata Māori: The Search for a Māori Parliament*. Presentation to the First Round Table of the World Parliament of Indigenous Peoples.
- McDowell, T. (2011). *My Country My People: The Māori People of Aotearoa/New Zealand*. Presentation to the First Round Table of the World Parliament of Indigenous Peoples.
- McIntosh, T. K. D. (2011). *Living the University: Who is the University?* Presentation to the Globalization, Neoliberal University, and Refiguring Spaces and Subjects Symposium.
- McIntosh, T. K. D. (2011). *Sociology and the Future*. Presentation to the Sociological Association of Aotearoa New Zealand Looking Forward: Trends, Horizons and Utopias Conference.
- McIntosh, T. K. D. (2011). *Keynote Address: Confined Citizenship: The Carceral and Indigeneity*. Presentation to the Postcolonial Studies Research Network Conference, Citizenship in an Era of Global Crisis.
- McIntosh, T. K. D. (2011). *Marginalisation and Method*. Paper presented to the British Sociological Association Conference, 60 Years of Sociology.
- McIntosh, T. K. D. (2011). *Vulnerability and Ethicality: Reesearch Relationships*. Paper presented to the Sociological Association of Aotearoa New Zealand, Looking Forward: Trends, Horizons and Utopias.
- McIntosh, T. K. D. (2011). Keynote address. *Confined Citizenship: the Carceral and Indigeneity*. Presentation to the Postcolonial Studies Research Network Conference, Citizenship in an Era of Global Crisis.
- Mill, C. (2011). *What is the Cost? Estimating the Economic Costs of Māori–Non–Māori Child Health Inequities in Aotearoa: A Scoping Study*. Paper presented at the Tōmaiora Seminar.
- Mill, C. (2011). *What is the Cost? Estimating the Economic Costs of Māori–Non–Māori Child Health Inequities in Aotearoa: A Scoping Study*. Presentation to the New Zealand College of Public Health Medicine Annual Scientific Meeting and Workshop.
- Mutu, M. (2011). *National Iwi Chairs Forum – Background and Selected Work Projects*. Presentation to the Māori Mai, Māori Atu: Annual National Māori Health Providers' Association Conference.
- Ogilvie, S. C., Ngamane, L., Taylor, D. & McNabb, P. (2011). *Tetrodotoxin and Kaimoana: Matauranga and Science to Mitigate Health Risks of a Naturally Occurring Neurotoxin*. Presentation to the National Water Symposium.
- Oorschot, D. E., Sizemore, R. J., Lin, N., Wastney, T., Reynolds, J. N. J. & Zhang, R. (2011). *Rat Striatal Cholinergic Interneurons have Markedly Fewer Synapses on their Soma and Primary Dendrites compared to Striatal Spiny Projection Neurons*. Presentation to the Australian Neuroscience Society Incorporation 31st Annual Meeting.
- Peacock, B. C. H. (2011). *A GIS-Based Riparian Buffer Placement Decision Support Tool Geospatially Integrating Hydrological, Ecological, Pollution, Economic, Social and Cultural Considerations*. Paper presented at the National Conference on Undergraduate Research 2011.
- Rollo, T. M. (2011). *Electro-Acoustic Can Enhance Māori Music*. Presentation to the Australasian Computer Music Conference.
- Rollo, T. M. (2011). *Te Taniwha Matekai*. Presentation to the Australasian Computer Music Conference.
- Royal, C. (2011). *Inaugural Professorial Lecture*. The University of Auckland.
- Royal, C. (2011). Presentation to the Coromandel Heritage Trust.
- Royal, C. (2011). Presentation to the first World Parliament of Indigenous Peoples.
- Royal, C. (2011). Presentation to the Pathways to Mātauranga Māori. NZQA, Wellington.
- Royal, C. (2011). Presentation at the SOUNZ Mōteatea Taonga Pūoro.
- Royal, C. (2011). Presentation to the Australian Deans of Arts, Social Sciences and Humanities Conference.

- Royal, C. (2011). *Keynote presentation*. Presentation to the New Zealand Qualification Authority, The University of Auckland.
- Royal, C. (2011). *Opening Address*. Presentation to the PasifikaNZ in the 21st Century, Education/Health/Economic Enablement Conference, The University of Auckland.
- Royal, C. (2011). *What is Matariki?* LATE at the Auckland Museum.
- Sakamoto, H. (2011). *Kapa Haka and its Educational Meanings in Today's New Zealand Society*. Presentation to the 6th International Conference on the Arts in Society.
- Sakamoto, H. (2011). *Researching Kapa Haka and its Educational Meanings in Today's Aotearoa/New Zealand: Weaving Methodologies, Perspectives and Decency*. Presentation to the 6th International Conference on the Arts in Society.
- Smith, G. (2011). *Transforming Māori Economic Development*. Presentation to the 2011 Critical and Sensitive Research Issues Symposium (CSRI) Māori Economic Development, Wellington.
- Solomon, M., Simpson, L. & Riley, G. (2011). *Panel One Discussion: Aspirations*. Presentation to the 2011 Critical and Sensitive Research Issues Symposium (CSRI) Māori Economic Development, Wellington.
- Stewart-Harawira, M. (2011). *Within and Without the Empire: Indigenous knowledge and its discontents in a time of great transition*. Seminar presented at Waipapa Marae, The University of Auckland.
- Tomas, N., Kapa, L. & Meredith, P. (2011). *Ngā Tikanga Mate Project Findings*. Presentation to the Justice in the Round Conference.
- Turuwhenua, J., Naqvi, H., Sulayman, M. & Mehwish, R. (2011). *A Virtual Eye For Use in an Optometry Clinic*. Presentation to the 2nd International Conference on User Science and Engineering.
- Walker, M. M. (2011). *He Tirohanga Ā Mua, He Kitenga Mā Muri: Looking Back to Look Forward*. Paper presented at the International Congress of Conservation Biology.
- Walker, M. M. (2011). *Keynote address: Te Whenua, Te Tangata, Te Aronui, Te Māramatanga*. Presentation at the Eleventh Annual Teaching and Learning Showcase: Active Learning Showcase.
- Walker, M. M. (2011). *Keynote. Te Whenua, Te Tangata, Te Aronui, Te Māramatanga*. Presentation to the First Year Biology Educators Colloquium 2.
- Walker, M. M. (2011). *Invited speaker. Te Whenua, Te Tangata, Te Aronui, Te Māramatanga*. Presentation to the Science and Innovation in Education Conference.
- Walker, M. M. (2011). *Te Whenua, Te Tangata, Te Aronui, Te Māramatanga: Growing Undergraduate and Postgraduate success for Māori and Pacific Island Students*. Presentation to the Ako Aotearoa Academy.
- Whepeihana-Wilson, T., Dodd, M. & Orzecki, R. (2011). *Panel Three Discussion: Local Solutions, Local Opportunities*. Presentation to the 2011 Critical and Sensitive Research Issues Symposium (CSRI) Māori Economic Development, Wellington.
- Wahaanga, H. (2011). *He Matapihi Mā Mua, Mō Muri: The Ethics, Processes and Procedures Associated with the Digitisation of the Pei Jones Collection*. Seminar at Waipapa Marae, The University of Auckland.
- Whitinui, P. (2011). *Increasing Māori Post-Graduate Success: The Politics of Cultural Encounter in Academia*. Presentation at the Tu MAI Post Graduate Induction Day.
- Wilson, J. K. T. (2011). *Ko Wai te Whakarāngahai la i Konei? (Who's Researching Who Here?): A Hapū (Ngāti Kawa) Case Study*. Presentation to the Perspectives on Power Post-Graduate and Early Career Researcher Conference.
- Wilson, J. K. T. (2011). *When Michael Jackson and Haka Collide: Boy Yeah*. Presentation to the Mid-West Popular Culture Association/American Culture Association Annual Conference.
- Wilson, J. K. T. (2011). *Whiripapa*. Presentation to the MAI Doctoral Conference.
- Yuen, B., Hyun, J. K., & Walker, M. M. (2011). *Characterization of Candidate Magnetite-based Magnetoreceptor Cells in the Olfactory Organ of Rainbow Trout*. Presentation to the Royal Institute of Navigation Conference on Orientation and Navigation – Birds, Humans and Other Animals.

Awards

- Walker, M. M. (2011). The Prime Minister's Supreme Award for Sustained Tertiary Teaching Excellence, Kaupapa Māori Category, National Tertiary Teaching Excellence Awards.

Creative and Documentary Works

Royal, C. (2011). Performance to the First Round Table, World Parliament of Indigenous Peoples. Bangalore, India. 5–14 January.

Royal, C. (2011). *Documentary on the Origins and History of Whare Tapere*. Aired on Waka Huia, TVNZ. 12 June 2011.

Royal, C. (2011). Reo performance at Hauraki Kotahitanga Concert, Paeroa. 29 January 2011.

Royal, C. (2011). Performance at Whare Tapere. Held at Waimangō, New Zealand. 5 February 2011.

Royal, C., Elena & Maguire, H. (2011). Performance for LATE at the Auckland Museum. 2 June 2011.

Royal, C. (2011). Performance at Pao Pao Pao. Auckland. 7 October 2011.

Other Supported Events and Workshops

Major Ngā Pae o te Māramatanga supported events detailed on pages 20-21.

MAI ki Otago-Tu MAI: Post Graduate Induction Day. Event Supported by Capability Building Programme. Event organised by Te Kupenga o MAI: Tu MAI. Held at the University of Otago. 11 February 2011.

MAI ki Poneke Student Seminar Series – Ethics Applications Workshop. Event Supported by Capability Building Programme. Presented by Ocean Mercier. Held at Victoria University of Wellington. 31 March 2011.

MAI ki Poneke Student Seminar Series – Writing Workshop. Event Supported by Capability Building Programme. Event organised by Te Kupenga o MAI ki Poneke. Held at Victoria University of Wellington. 28 June 2011.

MAI ki Poneke Student Seminar Series – Time Management. Event Supported by Capability Building Programme. Presented by Kathryn Sutherland. Held at Victoria University of Wellington. 24 February 2011.

MAI ki Poneke Student Seminar Series – Writing Retreat. Event Supported by Capability Building Programme. Event organised by Te Kupenga o MAI ki Poneke. Held at Big Bach, Raumati, Wellington. 31 March 2011.

MAI Review Special issue: Community Research Engagement. Print Launch. Organised by Ngā Pae o te Māramatanga. Held at The University of Auckland, New Zealand. 23 March 2011.

Māori and Pacific Textile Whatu Raranga a Kiwa Symposium. Symposium supported by Ngā Pae o te Māramatanga. Held at the Museum of New Zealand Te Papa Tongarewa, Wellington, New Zealand. 9–11 June 2011.

National Iwi Chairs' Forum Quarterly Hui. Hui supported by Knowledge Exchange Support Grant. Held at Takahanga Marae, Kaikōura. 5–6 December 2011.

Pathways to Mātauranga Māori. Event supported by Research Grant. Organised by Ngā Pae o te Māramatanga and New Zealand Qualifications Authority. Held at The University of Auckland, Auckland, New Zealand. 26 October 2011.

The State of Māori Rights. Book Launch. Launch supported by Publishing Support Grant. Organised by Margaret Mutu. Held at Waitangi, New Zealand. 6 February 2011.

The First He Piko He Taniwha symposium. Symposium supported by the Capability Building Programme. Organised by Landcare Research Manaaki Whenua, Ngāti Haua Trust & Waahi Whanui Trust. Held at Kaitumutumu Marae, Huntly, New Zealand. 28 March 2011.



CONTACT

Postal Address

Ngā Pae o te Māramatanga
Waipapa Marae Complex
The University of Auckland
Private Bag 92019
Auckland Mail Centre
Auckland 1142
New Zealand

Physical Address

Ngā Pae o te Māramatanga
Rehutai Building
16 Wynyard Street
The University of Auckland
Auckland
New Zealand

Web www.maramatanga.ac.nz

Email info@maramatanga.ac.nz

Ph +64 9 923 4220

Fax +64 9 373 7928

Ngā Pae o te Māramatanga
incorporates:

www.alternative.ac.nz

www.review.mai.ac.nz

www.journal.mai.ac.nz

www.mai.ac.nz

<http://scholar.mai.ac.nz>

<http://mediacentre.maramatanga.ac.nz>





www.maramatanga.ac.nz

ISSN 1176-8622
© Ngā Pae o te Māramatanga

